

AcuPulse™ CO₂ Laser

with SurgiTouch™ Automation System



An Evolution in Automated Laser Surgery

SurgiTouch™ Automation System

Automated and Robotic Laser Surgery

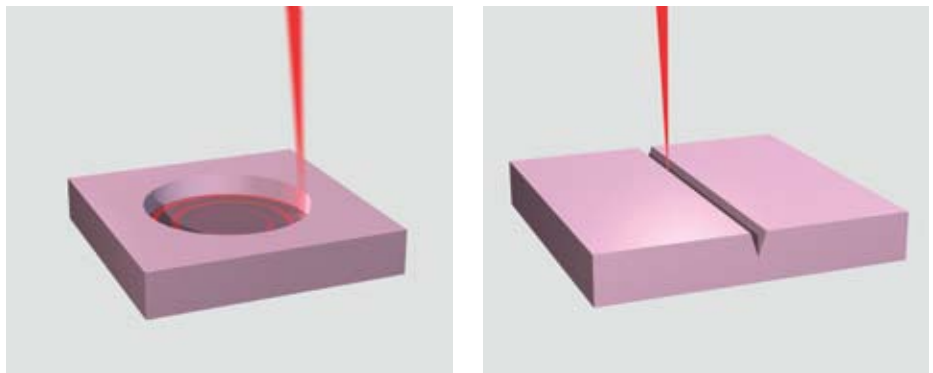


The AcuPulse CO₂ Laser with SurgiTouch automation system enables speed, precision and convenience levels unattainable by manual laser treatment

Application guided user interface. Select specialty and application

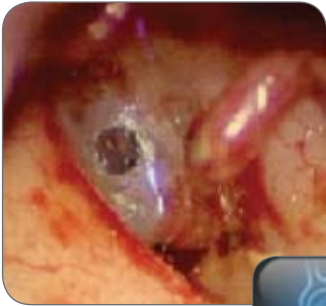


Automated ablation and incision through robotic SurgiTouch scanner

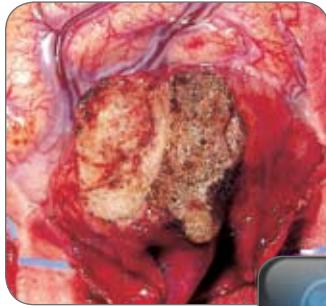


Automated Laser Applications

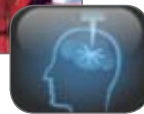
A New Standard in Treatment Convenience



One-scan
Stapedotomy



Neurosurgery



Laser Myringotomy



Laryngology



Turbinate Ablation



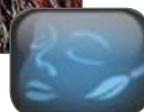
Scanning Colposcopy



Tonsil Ablation



Dermatology



Scanning Laparoscopy



Ask your Lumenis Representative about our comprehensive accessories for Aesthetic applications, like fractional skin resurfacing, etc.

SurgiTouch Automation System

Focus on the Surgery, Not the Setup

Select the medical specialty and desired application and SurgiTouch goes to work:

- Automatic laser delivery device suggestion
- Automatic laser treatment parameter recommendation
- Robotically assisted laser treatment

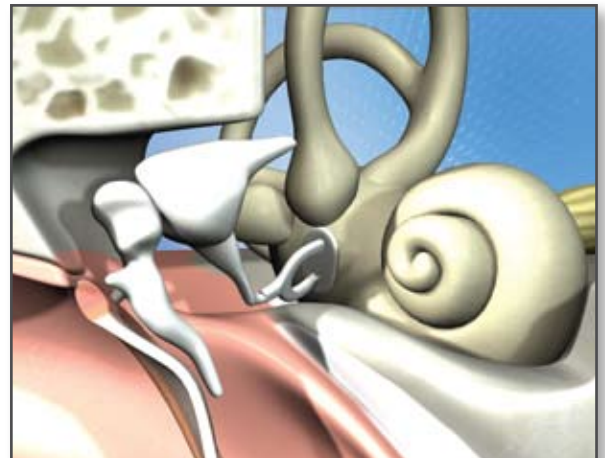
Personalized treatment data storage



Animated support video of accessory assembly



Animated support video of treatment **



** Available Fall 2009



from Ease of Use to Joy of Use



Convenient, Safe and Effective

- Reproducible and consistent treatment due to automation
- Robotic, computer controlled laser beam movement provides for unmatched precision
- Very brief laser-tissue interaction leads to minimal thermal damage
- Incision or ablation in 150 microns depth resolution steps
- Hand tremor impact eliminated
- Ideal teaching and training system

AcuPulse with SurgiTouch

An Evolution in Automated Laser Surgery

Automated

SurgiTouch system provides for automated and robotic treatment execution. Unparalleled precision and reproducibility.

Evolving

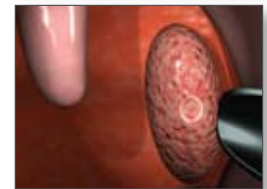
Built with the future in mind and upgradable in stages. Video user interface infinitely adaptable to new features.

Versatile

An affordable system for multiple applications in Otolaryngology, Gynecology, Aesthetics, Neurosurgery and General Surgery.

Educational

Integrated videos display assembly of accessories and basics of laser procedures. Largest network of laser courses and clinical support.



AcuPulse

Basic Laser System Provides an Economical Alternative

The basic AcuPulse system without SurgiTouch is an economic and ideal starting point for effective laser treatment across all surgical specialties. Through its vast range of accessories and upgrades, it is an ever evolving platform with numerous benefits for the physician:

- Compact size & cost effective
- Largest multi-disciplinary accessory assortment
- SuperPulse- Pulser- and CW operating modes offer adjustable thermal damage
- Storage of personalized laser treatment data
- Video tutorials demonstrating accessory assembly
- Personalized log-in allows to define preferred user interface screens and navigation
- Fully upgradeable to SurgiTouch automation system and other options available in the future
- Optional smart footswitch and remote control panel (Fall 2009)

Proven Performance

AcuPulse succeeds the Compact product line from Lumenis, the world's most popular surgical CO₂ laser system. Although compact in size, it is a powerhouse of treatment versatility.



Unmatched Range of Accessories:

- SurgiTouch automation system
- Digital AcuBlade microsurgery system
- AcuSpot 712 micromanipulator
- AcuSpot 712 L/Z large aperture micromanipulator
- Oral-Pharyngeal multi-application handpiece
- Laser bronchoscope
- Single/Second puncture laser laparoscope
- BeamAlign laparoscope laser coupler
- Skin resurfacing handpieces
- Incisional handpieces
- Fractional skin resurfacing scanner
- OtoScan ear aeration system
- Nasal & Laryngeal probes
- MicroSlad & ColpoSlad micromanipulators

AcuPulse™ CO₂ Laser

with SurgiTouch™ Automation System

Technical Specifications				
AcuPulse Models	30 / 40 / 30 ST / 40 ST (ST = with SurgiTouch system)			
Laser Type	CO ₂ Laser, sealed-off, DC excited			
Wavelength	10.6 micron, infrared			
Mode Structure	TEM ₀₀			
Laser Operating Modes	Continuous Wave (CW), Pulser, SuperPulse			
CW Power	1 – 30 W / 1 - 40 W			
SuperPulse Average Power	0.5 – 10 W / 0.5 - 15 W (Timed: 0.2 – 10 W / 0.2 – 15 W)			
Pulser Average Power	Peak Power: 300 W / 350 W			
Pulser Average Power	1 – 25 W / 1 - 35 W			
		Power (W)	On Time (sec)	Off Time (sec)
Tissue Exposure Modes (Model: AcuPulse 40 (30))	Continuous:	1.0 – 4.5 5.0 – 40 (30)	N.A.	N.A.
	Single pulse	1.0 – 4.5 5.0 – 40 (30)	0.05 – 1.00 0.01 – 1.00	N.A.
	Repeat pulse:	1.0 – 4.5 5.0 – 40 (30)	0.05 – 1.00 0.01 – 1.00	0.01 – 1.00 0.01 – 1.00
Controls	Multi-color touch panel – high resolution, footswitch			
Aiming Beam	5 mW red diode laser, 635 nm, adjustable intensity, blink on/off			
Beam Delivery	Lightweight, carbon fiber, 7-joint, spring balanced arm, 120 cm (47.2") reach, 360 deg. rotation			
Memory Settings	Min. 100			
Cooling	Self-contained, closed cycle			
Electrical	100 - 240 VAC, 10A (Max), 50/60 Hz			
Dimensions	37 cm W x 40 cm D x 119 cm H; (14.6" W x 15.8" D x 47" H)			
Weight	49 kg (108 lbs)			
Standards	CE, UL			
For Models 30 ST / 40 ST (with SurgiTouch) only:				
Automated Specialties and Applications	ENT	Tonsillectomy, LAUP, Bronchoscopy, Stapedectomy, Nasal Surgery, Larynx, Myringotomy		
	GYN	Laparoscopy, Colposcopy, Free Hand		
	Aesthetics	Skin Resurfacing (SilkTouch, FeatherTouch, Paint Mode), Blepharoplasty		
	General Surgery	General, Proctology		
	Neurosurgery	Microsurgery, Free Hand		
Feature	<ul style="list-style-type: none"> Automatic suggestion of accessory based on selected application Automatic suggestion of treatment parameters Robotically assisted laser treatment. User can overrule settings 			

